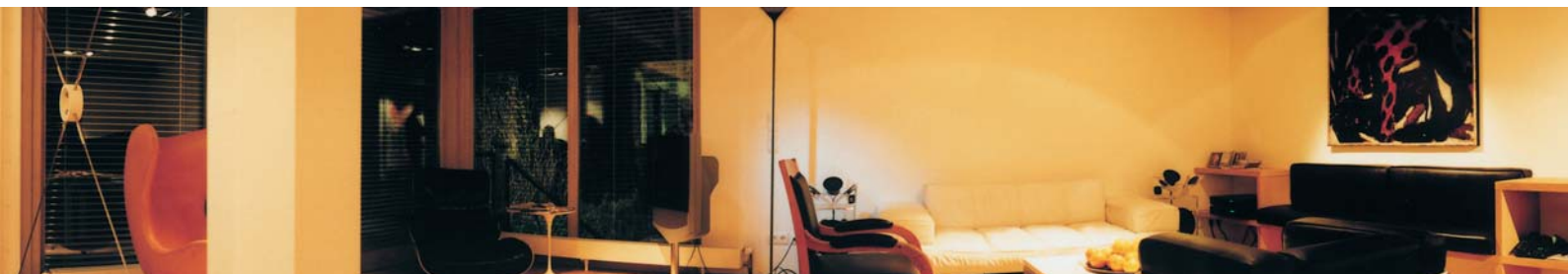




**BERKER RADIO BUS
FLAT COMPONENTS**



B.

Berker the right way.

THE DESIRE FOR MORE COMFORT

Who wouldn't like life a little easier and more comfortable? If this would mean switching or dimming the lights more easily in rooms, the Berker Radio bus offers one of the most simple solutions.

For example, when an additional switch is desired for a light. Or when rooms are used for a new purpose and the operating positions are supposed to be altered.

In cases like these, you used to have to open up the walls and put in new cables. With the Berker Radio bus, you no longer need to install a single wall box again. The new operating positions are simply mounted on the wall. No cable, no box, no stress.



THE FLAT BERKER RADIO BUS SYSTEM COMPONENTS HAVE MANY ADVANTAGES

- For light, blinds, awnings, and shutters.
- Quick and easy installation without a wall box.
- No caulking work, no dirt.
- Switching, dimming, and shutter control are possible.
- No additional receivers in the light fixture are required.
- Ideal for upgrading and for historical buildings.
- Available in almost all Berker designs.
- With the regard to organic architecture advantageous, as radio signals must be transmitted only very short distances.



THE BERKER RADIO BUS WALL-TRANSMITTER FLAT



Also suitable for comfortable light scene management:
the Berker radio wall-transmitter flat is available in 1gang, 2gang, and 4gang.

SET UP ROOMS WITH LIGHT IN THE SCENE

Bright light for reading, muted light for television, warm light for eating: you only need one switch to control the light.

However, if multiple lights need to be operated in combinations, then it is time for light scenes. Shutters, awnings, or blinds are also very easy to control with these components. With the flat components for the Berker radio bus, you can add as much comfort as you need, anytime: the right light by pressing a button.

The Berker radio bus wall-transmitter flat is designed to be only a few millimetres thick. That's why you don't need a wall box – in contrast to conventional installation. The transmitter can simply be screwed or glued onto the wall.

Thus is it even possible to affix it to pieces of furniture or glass surfaces.

The connecting radio signal of the transmitter is transmitted to a receiver on the previously used switch or dimmer. To do this, the existing switch or dimmer is simply replaced by a Berker BLC insert with BLC radio button. Both devices are programmed to each other in a few, very simple steps.



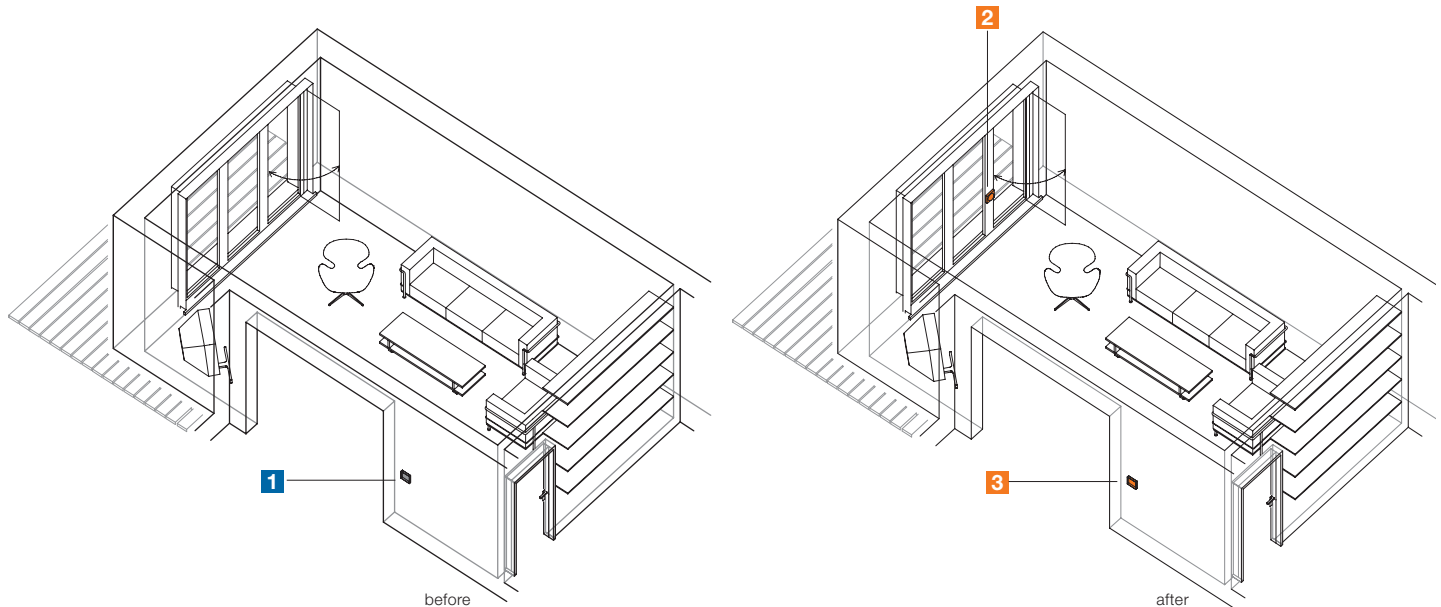
EXAMPLE: LIVING ROOM

THE PROBLEM:

The light in the living room is operated by a switch next to the door **1**. In order to be able to switch and dim it from the patio door in the future, additional cables would actually have to be routed here. Installing the switch or dimmer near the patio door is also troublesome: placing it behind the door doesn't work, and on the other side is only the window frame.

THE SOLUTION:

The radio wall-transmitter flat is simply glued to the frame of the patio door **2**. The previous switch is replaced by a BLC dimmer with attached BLC radio button from the Berker BLC System **3**. After both devices have been "programmed", the desired new comfort is available immediately.



Required components: e.g. S.1 radio wall-transmitter 1gang, flat (Order No. 2721 19 09),
Frame 1gang (Order No. 1011 99 09), BLC universal touch dimmer (Order No. 2902),
BLC radio button (Order No. 1760 19 09)

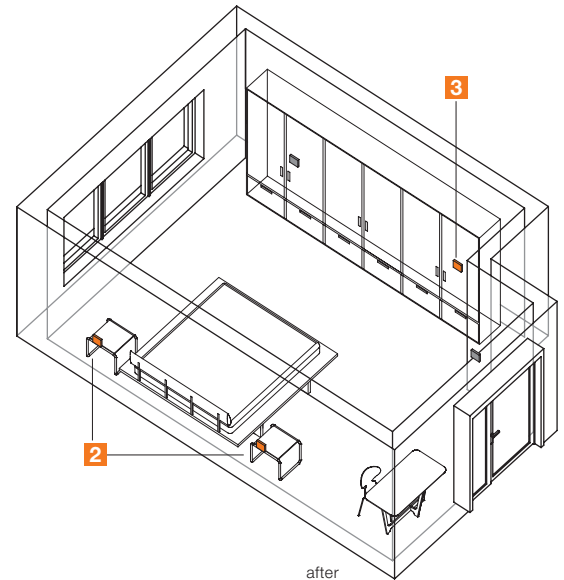
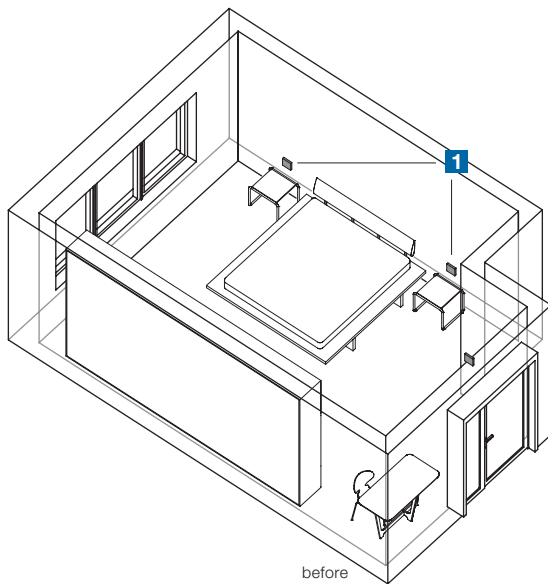
EXAMPLE: BEDROOM

THE PROBLEM:

When rooms do not have a particular purpose or need to be re-arranged, the location of the operating positions are normally no longer optimum. Like in this bedroom, for example. The bed is no longer on the same wall. The ceiling light switches at the height of the bed are useless, and might even be covered up by a wardrobe **1**.

THE SOLUTION:

The flat radio wall-transmitter is simply affixed on the wall to the left and right of the bed **2**. Instead of an old switch, a BLC dimmer with attached BLC radio button is used **3**. The new wall-transmitter transmits its signal wirelessly to the previous switch position. If desired, the light can now be dimmed from the bed. Also, minimum lighting can be activated with the wall-transmitter. The partner can then continue to sleep without being woken.



Required components: e.g. S.1 radio wall-transmitter 1gang, flat (Order No. 2721 19 09),
Frame 1gang (Order No. 1011 99 09), BLC universal touch dimmer (Order No. 2902),
BLC radio button (Order No. 1760 19 09)

THE BERKER RADIO CONTROLLERS 180 FLAT



It sees everything, so that you can see well:
the controller only switches the light on when it is needed.

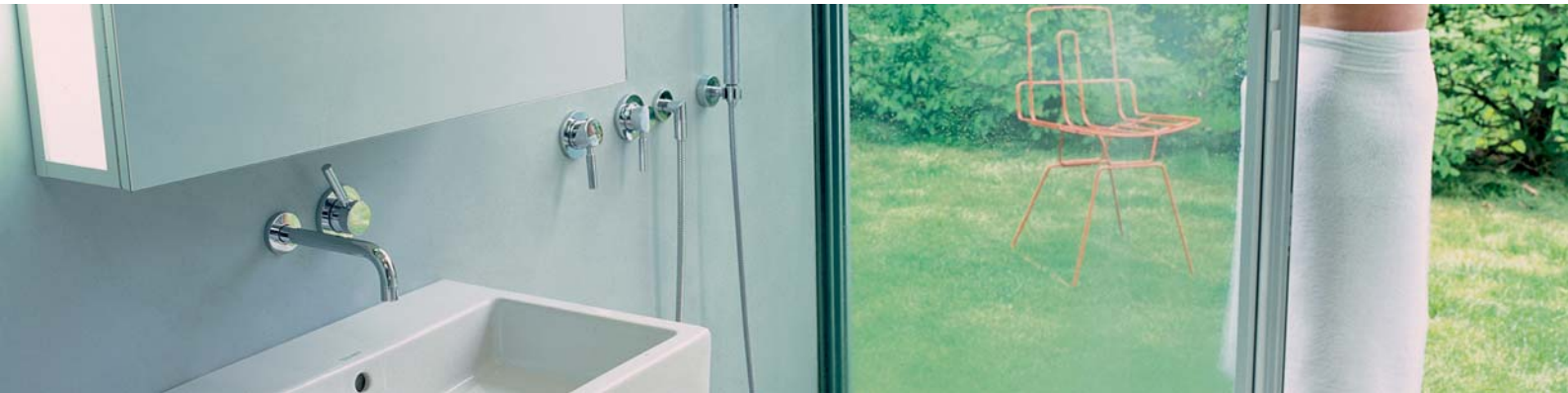
SWITCHING WITH YOUR HANDS FREE

You come into the bathroom early in the morning – and the light turns on automatically. Or you return home from shopping and don't have a hand free, but the light in the corridor switches on by itself. A little extra comfort can be so nice.

The Radio controllers 180 flat is the ideal solution everywhere light should be switched on automatically. It offers the full function of a controller, but without cabling and wall box. It can be installed later wherever you would like it to be just a little more comfortable.

Ideal for rooms where switches are positioned in difficult locations, for example:

- Baths
- Guest toilets
- Winding corridors or hallways
- Cellar or storage rooms



Savvy in the bath:
the radio controllers 180 flat switches the light automatically on and off again.

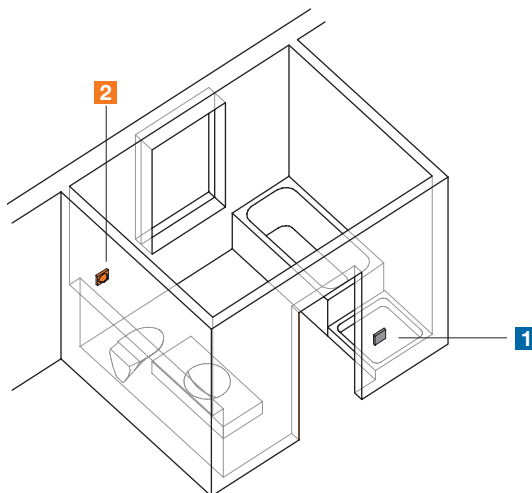
EXAMPLE: BATHROOM

THE PROBLEM:

For reasons of safety, the light in the bathroom is only operated from a switching position outside the bath **1**. If you would like your guests to not have to spend time looking for the light switch, it would be helpful if the light would switch on automatically when they enter the room.

THE SOLUTION:

Installation of a radio controller in the bath **2**, without damaging tiles or without dirt. The previous switch on the outside next to the door is replaced by a BLC switch insert with attached BLC radio button. Now the light switches on automatically when someone opens the door – and off again when no one is in the bath. It could hardly be more comfortable.



Required components: e.g. S.1 radio controllers 180 flat (Order No. 9420 19 09),
Frame 1gang (Order No. 1011 99 09), BLC Tronic switch insert (Order No. 2916),
BLC radio button (Order No. 1760 19 09)

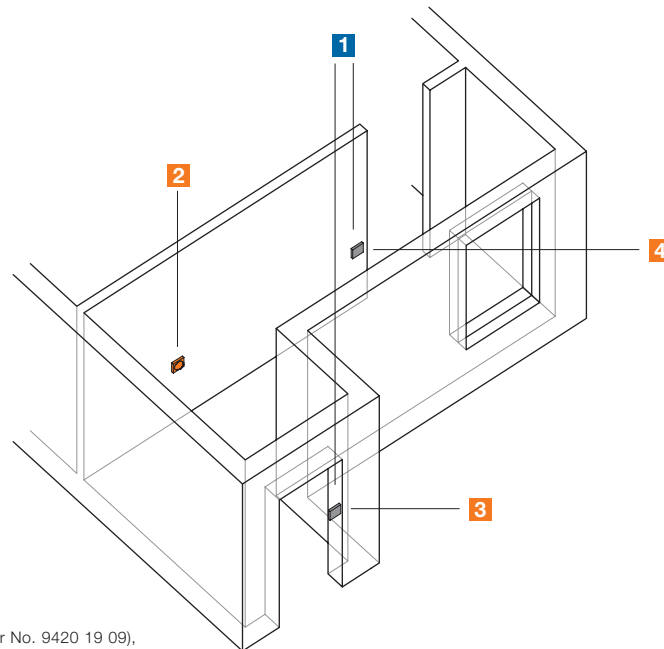
EXAMPLE: CORRIDOR LIGHT

THE PROBLEM:

The corridor is already equipped with two switches **1**. However, in situations where both hands are full, these switches are no easy to operate. With your shopping goods in your hands, you nearly have to perform acrobatics just to switch on the light.

THE SOLUTION:

The existing installation is supplemented by a radio controller **2**. Combined with a BLC switch insert with BLC radio button **3** the radio controller switches the light on automatically when something moves it its detection field. The second **4** switch is replaced by a BLC extension with BLC button. This way both operating positions can continue to be used manually. After 1 minute, it switches off the light again if no other movements are detected. By the way: the light in the corridor is only switched on if the measured brightness needs it.



Required components: e.g. S.1 radio controllers 180 flat (Order No. 9420 19 09),
Frame 1gang (Order No. 1011 99 09), BLC Tronic switch insert (Order No. 2916),
BLC radio button (Order No. 1760 19 09), BLC extension (Order No. 2907),
BLC button (Order No. 1761 19 09)

MOUNTED IN ONLY 15 MINUTES

1 INSTALLATION OF RADIO WALL-TRANSMITTER FLAT:

You won't need a hammer and chisel here. The Berker radio bus wall-transmitter flat makes installation absolutely easy. The new switch or dimpush button is attached in three easy steps.

2 INSTALLATION OF THE RADIO CONTROLLERS 180 FLAT:

The radio controller can also be installed just as easily. As soon as the base plate has been glued or screwed at the desired position, put on the radio controller element together with the matching frame. Don't forget: insert the battery first.



Screw or glue the base plate on the desired location and then screw down the radio wall-transmitter tightly. Then clip in the label strip – finished!

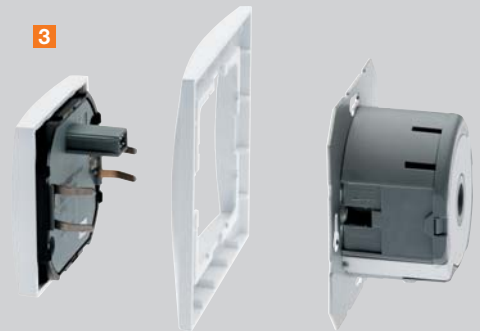


Equally as easy to install: the radio controller only consists of three components which must be joined together. Insert the battery, mount the base plate, attach the controller, it is ready for operation.

3 INSTALLATION OF BERKER BLC INSERT WITH BLC RADIO BUTTON:

After you have removed the existing switch, secure the cable in the BLC system insert. Now you can insert it in the existing wall box and attach the BLC radio button to the matching frame.

Finished.



Even the BLC insert with the matching cover is mounted in a few steps.

PROGRAMMING? CHILD'S PLAY!

The Berker radio bus components are easy to "program" to each other:

1. Press the full surface of the BLC radio button (on the previous switch position with the lights switched off) for 4 seconds. As a confirmation, a pulsing, acoustic signal sounds.
2. Press the wall-transmitter and hold it down until the pulsing signal of the BLC radio button changes to a constant tone. On the radio controller, insert the battery and activate the controller (by moving your hand in the detection field, for example) and wait until the BLC radio button changes over to a constant tone.
3. Pressing the BLC radio button briefly again ends the constant tone and ends the programming process.
4. Place the controller on the floor plate again. Finished.

IMPORTANT: a distance of 0.5 to 5 m between transmitter and receiver must be kept only during the programming process.



"Got it"? Then we will be glad to show you how you can make your apartment more comfortable with little expense:

- Blinds, awnings, and shutters obey the press of a button,
- Multiple lights can be programmed for light scenes,
- Additional operating positions save you long distances.

Read our brochure about the Berker radio bus system.

Simply obtain one from a dealer or request one from us:

Order No. 0301 34

TECHNICAL DATA

CONTROLLER SPECIFICATIONS:

Radio controllers 180 flat Order No. 9420...

Power supply	3 V=
Battery type	1 x Lithium coin cell (type: CR 2450 N)
Battery life	approx. 2 - 3 years
Fast flashing of red LED (approx. 1 s after transmission)	Battery flat, change
Transmission frequency	433.42 MHz, (ASK)
Transmission range	max. 60 m (free field)
Transmission power	> 1 mill.
Radio codes (assign once)	> 1 Mrd.
R&TTE approval (for EU and EFTA countries)	Yes
Number of channels	1
Detection angle	180°
Detection field	semi-oval, approx. 10 x 12 m
Recommended installation height	1.1 m
Response sensitivity	approx. 20 – 100 %
Response brightness	approx. 1 – 80 / ∞ Lux
Operating temperature	5 – 35 °C
Protection class	IP 20
Installed height	approx. 23 mm

WALL-TRANSMITTER SPECIFICATIONS:

Radio wall-transmitter flat Order. No. 2721..., 2722..., 2724...

Power supply	3 V=
Battery	1 x Lithium coin cell (type: CR 2032)
Battery life	approx. 3 years
Multiple flashing of all LEDs when transmitting	Battery flat, change
Transmission frequency	433.42 MHz, (ASK)
Transmission range	max. 100 m (free field)
Transmission power	< 10 mW
R&TTE approval (for EU and EFTA countries)	Yes
Number of channels	1, 2 or 4 depending on type
Radio codes (assign once per channel)	> 1 mill
Light scenes	1, 3 or 5 depending on setting and type
Operating temperature	0 – 55 °C
Protection class	IP 20

BERKER – THE RIGHT WAY

Do you know how to design rooms with exceptional ease and with a more individual style?
At Berker we have been working on that since 1919 – and we have found some highly attractive answers.

Berker switches and systems are in use all over the world, making life more beautiful, easier and more comfortable. We place the utmost emphasis on quality, design and innovation. This is confirmed by the numerous awards we have received both at home and abroad.

Berker is a leading supplier of high-quality electrical installations – from timelessly classic switch design through to intelligent building management systems. All new developments are created with just one thing in mind: the satisfaction of our customers. After all, we want you to feel at home with our products for decades to come.

Don't just let your life be guided by taste, but also by state-of-the-art technology,
with Berker – the right way.



Berker Switches and Systems

Berker GmbH & Co. KG
Klagebach 38, 58579 Schalksmühle/Germany
Telephone + 49 (0) 23 55/9 05-0, Fax + 49 (0) 23 55/9 05-1 12
export@berker.com
www.berker.com

Order no. 0302 05